

MULTI BULL

THE RIGHT TOOL FOR EVERY TASK

W 3 H

THREE-WAY
TIPPER FOR
TRANSPORTING
LOOSE
MATERIALS AND
GOODS ON
PALLETS

 **KH-KIPPER**
Bodies Trailers Semitrailers



DESCRIPTION

UNIVERSAL SOLUTION

Today, most companies are looking for universal and multifunctional solutions that will quickly change the purpose of the vehicle by using it throughout the year for various types of transport. Three-way tippers allow unloading not only on three sides, but also maneuvering in a limited space such as a construction site. They also have universal application. One tipper can be used for transport, e.g. loose materials (sand, gravel), palletized materials, or small construction machines (road rollers).

Equipping the tipper with a hydraulic crane allows for independent loading and unloading, where there is no access to a forklift, and the trailer increases the total load capacity of the vehicle. The rear wall in the form of a French door opening sideways allows the transport of long elements, e.g. sewer pipes.

Due to the greater precision when unloading and the possibility of loading with a forklift, classic tippers with tilting side boards in the upper axle are being more often displaced by **tipper with bodies equipped with a left hydraulic side.**



LEFT HYDRAULIC WALL

The three-way W3H body with underfloor cylinder is equipped with a **hydraulic left side wall**. The hydraulic side wall lowers smoothly downwards from vertical position to 180° depending on the configuration of the chassis. This enables a forklift to drive up to the body and efficiently load palletized materials, e.g. paving stones [A].

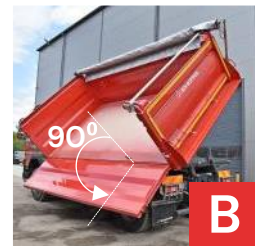
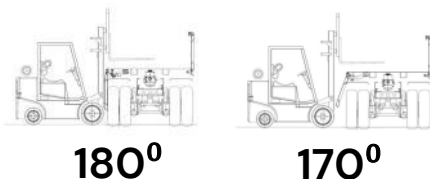
After lifting the body and opening the side wall to 90°, it is possible to precisely unload the material at a certain distance from the vehicle. When heaping banks or filling trenches along the road, the material does not fall on wheels and side elements of the chassis allowing easy exit from the heaped load [B].

Opening of the side wall to 90° without lifting it [C] allows to load the materials from a loading ramp.

The hydraulic side wall is controlled by a joystick mounted in the cabin at the driver's seat. Operation is possible both from the ground and from the seat without having to get out of the cab, which is important when working in difficult terrain or in bad weather.



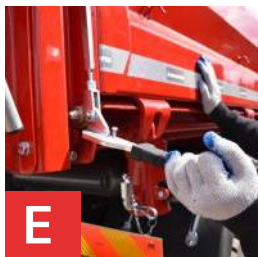
LOADING WITH A FORK-LIFT



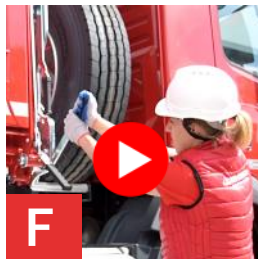
RIGHT SIDE WALL OPENING UPWARDS AND DOWNWARDS

After opening of the right side wall downwards, it is possible to drive to the tipper with a forklift and load construction materials on pallets [D]. Manual opening of approx. 300 kg side wall is possible thanks to spring compensation. Just release the 2 levers [E] on the sides of the side wall and pull it all the way down. The special lock [F] prevents the bottom locks from opening in this position, which could lead to an uncontrolled fall of the side wall to the ground.

Unloading of the loose materials, e.g. sand or gravel, is performed automatically after releasing of the bottom locks [G].



Opening of the bottom or upper locks by means of levers



The blockade prevents opening of bottom locks when the upper locks are open and vice versa



Unloading of the loose materials after releasing of the bottom locks



Fixed wall



Divided wall



REAR WALL

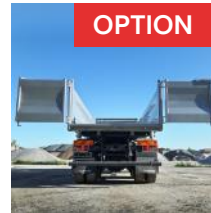
Rear wall opens automatically when the body is raising and closes when lowering. In the new solution, the mechanical locking system has been optimized, thus improving functionality and safety. The SNEEP shovel is located at the same level as the floor, which means that loose material easily falls down and does not collect in any other element. The rear shovel can be removed and replaced if necessary.



Improved locking mechanism



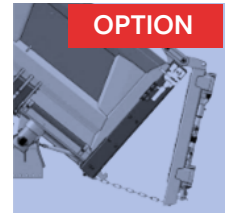
SNEEP rear shovel on floor level



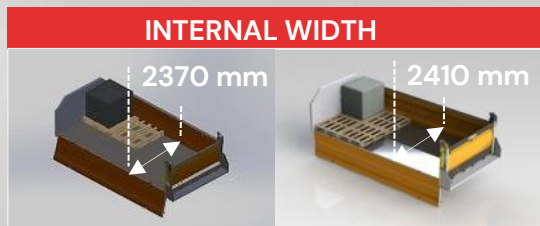
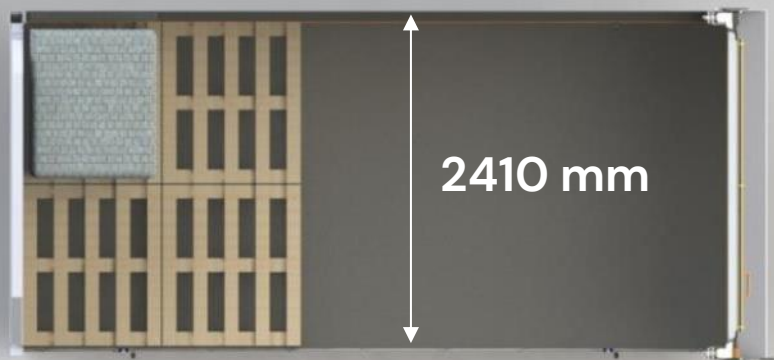
French door allowing transport of long loads



Rear wall opened pneumatically or chutes allowing for dosing of the material



limiting by chains



MORE LOADED PALLETS

The internal width of the body is 2 410 mm. The unique solution allows to load two pallets side-by-side.



IMPROVED TIGHTNESS OF THE BODY

Due to better tightness of the body it is possible to transport even very small loose materials (poppy or rape seeds)



HIGH-STRENGHT STEEL

Due to the fact that during transport the body is exposed to harsh operating conditions, the main construction was made of high-strength **HARDOX**® steel (floor 6 mm and side walls 4 mm), whereas the supporting structure was made of strong **STRENX**™ steel. The high-quality Swedish **HARDOX** steel used to manufacture the body provides it with adequate rigidity and, at the same time, a light design.

TARPAULIN OPERATED FROM THE GROUND

The load is usually protected against adverse weather conditions by traditional tarpaulin. This solution, however, requires climbing on the tipper. The tarpaulin operated from the ground by means of an elongated crank improves the driver's comfort of work and increases his safety, especially during bad weather conditions e.g. in winter, when the surface of the truck is icy. Operating the tarpaulin from the ground also takes less time, which is especially important when it is used very often.



Operating the tarpaulin without climbing the body is safer and helps to save time



The crank and the poker hook for the lines can be folded when they are not used

NEW FEATURE



TECHNICAL SPECIFICATION

CONSTRUCTION

- floor 6 mm, high-resistant HARDOX 450 steel,
- sides 4 mm, high-resistant STRENX 700 steel
- left side wall hydraulically opened to the angle of 180°, bended,
- right side wall with top and bottom hinges, not divided, bended
- rear wall 5 mm STRENX with top hinges – automatically opened when raising the body
- front wall with small roof and ladder
- the body is shot blasted, primed and painted in requested color
- **well equipped as standard**

HYDRAULICS

- Underfloor hydraulic cylinder
- Hydraulic pump
- Oil tank with filter
- Pneumatic tipping control from the cab
- Main valve
- Hydraulic hoses



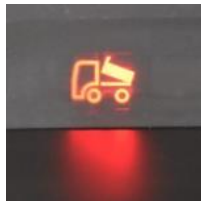
EQUIPMENT



Folded ladder from under the floor to operate tarpaulin



Folded ladder on front wall



Raised body signal in cabin



Wheel chocks mounting



Folded tarpaulin on side wall



Rear foldable bumper



Mounting of spare wheel with winch behind cab



Marking plates



Yellow marking lights



Conspicuity marking tapes



Side underrun protections



Plastic mudguards for rear bogie



Supporting leg under body



Rear lights protections with openable grate



Towing points



Handles allowing to climb on the body



Leasinger ball hinges



Tarpaulin operated from the ground

OPTIONS



Hydraulic crane



Hydraulic installation
for trailer



MULTIKAP hydraulic roof



CRAMARO /
MARCOLIN tarpaulin
system



Aluminium mudguards
on rear bogie



Level raisers



Hydraulically folded rear
bumper



Stability control
system



Mounting of
shovel under
the floor



Painting in two colors



Advertising stickers



exchangeable system

PERSONALIZATION

CONSTRUCTION



MUNICIPAL SECTOR



ENERGETICS



ONE TIPPER — DIFFERENT NEEDS



KH-KIPPER Sp. z o.o.
Kajetanów 130
26-050 Zagnańsk
Poland

tel. +48 41 30 11 568
fax +48 41 30 11 303

sales@kh-kipper.pl
www.kh-kipper.pl



Find us on

